

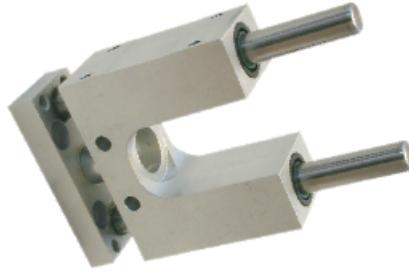
JEDINICE ZA VOĐENJE AMC/ GUIDE UNIT AMC

Tehnicki podaci/Technical data

Temperatura/Temperature
max. 70°

Materijal/Material

Tijelo/Body Aluminij/ Aluminum
Vodilice/Guides 1.1213 / 62-64 HRC
Brisaci/ Wipers PU



ZA CILINDRE ISO 6432
FOR CYLINDERS ISO 6432

KOD ZA NARUCIVANJE / ORDER CODE:

AMC - [] - [] - []

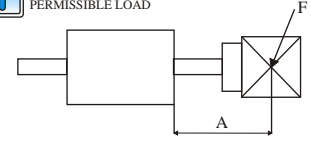
NAZIVNI PROMJER/DIAMETER
8,10,12,16

HOD/STROKE

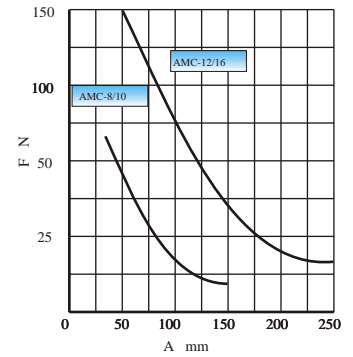
OPCIJA/ OPTION

BA S kliznim vodilicama
With slide bushes
BB S kuglicnim ležajima
With ball bushes

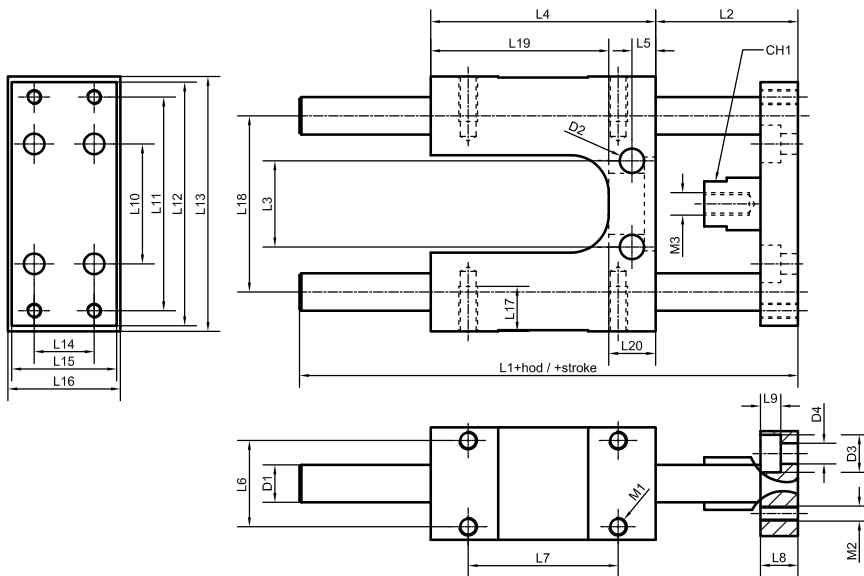
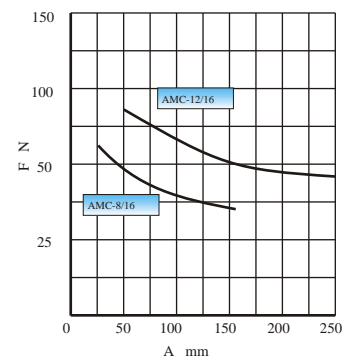
DOZVOLJENO OPTERECENJE
PERMISSIBLE LOAD



BA S kliznim vodilicama
With slide bushes



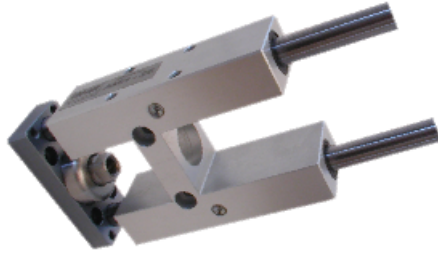
BB S kuglicnim ležajima
With ball bushes



Ø	L1	L2	L3	L4	L5	L6	L7	L8	L9	L10	L11	L12	L13	L14	L15	L16	L17	L18	L19	L20	ØD1	ØD2	ØD3	ØD4	M1	M2	M3	CH	CH
8	86	31	25	48	6	21	25	8	5.7	25	42	64	67	16	26	29	10	48	41	7	8	5.5	10	5.5	M.5	M.5	M.4	9	9
10	86	31	25	48	6	21	25	8	5.7	25	42	64	67	16	26	29	10	48	41	7	8	5.5	10	5.5	M.5	M.5	M.4	9	9
12	108	38	23	60	6.5	23	40	10	5.7	32	57	65	68	16	28	30	12	47	47	13	10	5.5	10	5.5	M.5	M.5	M.6	12	12
16	108	38	23	60	6.5	23	40	10	5.7	32	57	65	68	16	28	30	12	47	47	13	10	5.5	10	5.5	M.5	M.5	M.6	12	12

JEDINICA ZA VOĐENJE AMH/ GUIDE UNIT AMH

ZA CILINDRE ISO 6432
FOR CYLINDERS ISO 6432



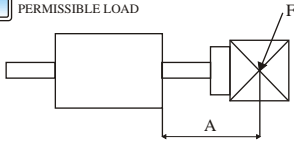
Tehnicki podaci/Technical data

Temperatura/Temperature
max. 70°

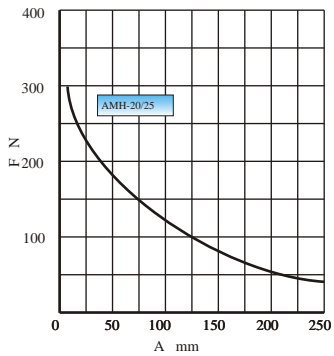
Materijal/Material

Tijelo /Body Aluminij/ Aluminum
Vodilice /Guides 1.1213 / 62-64 HRc
Brisaci / Wipers PU

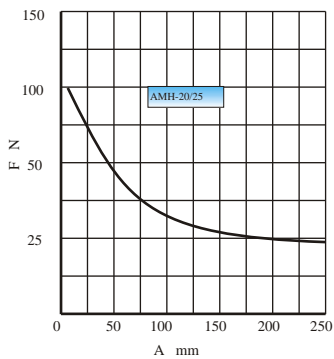
DOZVOLJENO OPTEREĆENJE
PERMISSIBLE LOAD



BA S kliznim vodilicama
With slide bushes



BB S kuglicnim ležajima
With ball bushes



KOD ZA NARUČIVANJE / ORDER CODE:

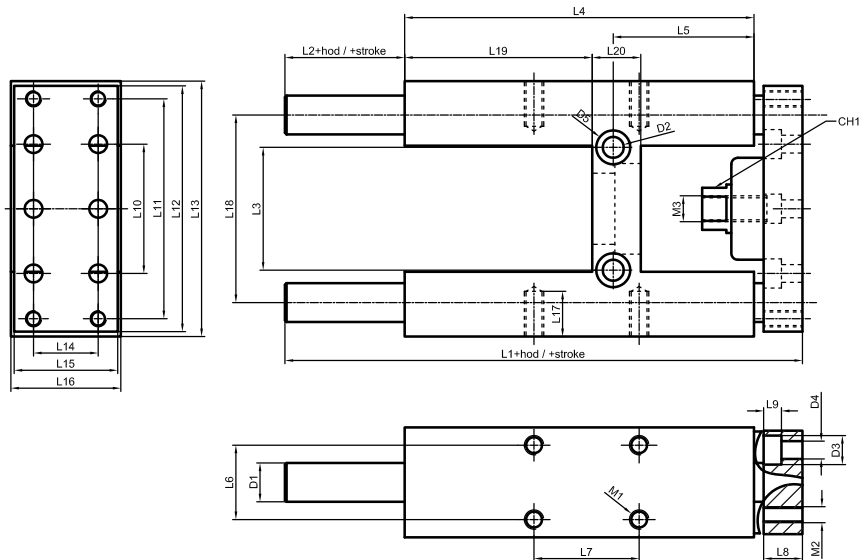
AMH - [] - [] - []

NAZIVNI PROMJER/DIAMETER
20,25

HOD/STROKE

OPCIJA/ OPTION

- BA S kliznim vodilicama
With slide bushes
- BB S kuglicnim ležajima
With ball bushes



Ø	L1	L2	L3	L4	L5	L6	L7	L8	L9	L10	L11	L12	L13	L14	L15	L16	L17	L18	L19	L20	ØD1	ØD2	ØD3	ØD4	M1	M2	M3	CH
20	160	37	38	108	41.5	23	32.5	12	6	40	68	76	79	20	32	34	14	58	58	15	12	6.5	9	5.5	M 6	M 5	M 8	13
25	160	37	38	108	41.5	23	32.5	12	6	40	68	76	79	20	32	34	14	58	58	15	12	6.5	9	5.5	M 6	M 5	M 10x1.25	13

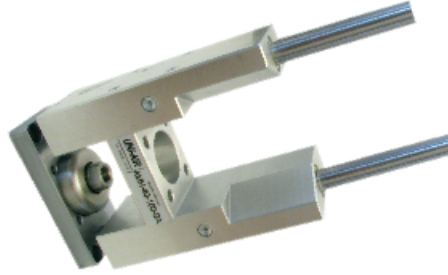
JEDINICA ZA VOĐENJE AMH/GUIDE UNIT AMH

Tehnički podaci/Technical data

Temperatura/Temperature
max. 70°

Materijal/Material

Tijelo/Body Aluminij/ Aluminum
Vodilice/Guides 1.1213 / 62-64 HRc
Brisaci/ Wipers PU



ZA CILINDRE VDMA 24562, ISO 6431
FOR CYLINDERS VDMA 24562, ISO 6431

KOD ZA NARUCIVANJE / ORDER CODE:

AMH - [] - [] - []

NAZIVNI PROMJER/DIAMETER
32,40,50,63,80,100

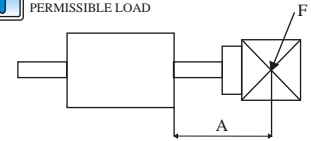
HOD/STROKE

OPCIJA/ OPTION

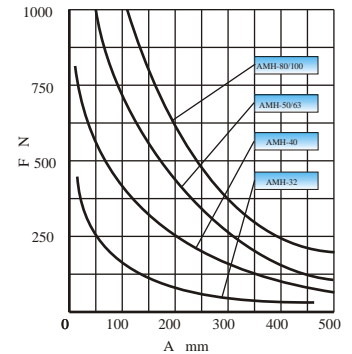
BA S kliznim vodilicama
With slide bushes
BB S kugličnim ležajima
With ball bushes



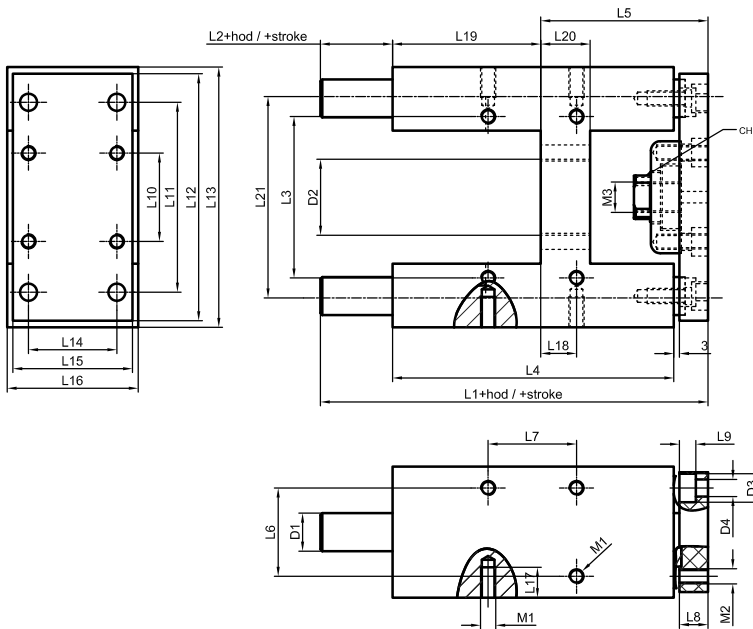
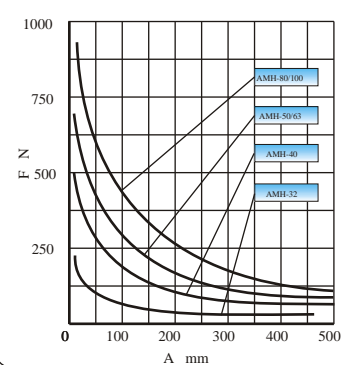
DOZVOLJENO OPTERECENJE
PERMISSIBLE LOAD



BA S kliznim vodilicama
With slide bushes



BB S kugličnim ležajima
With ball bushes



Ø	L1	L2	L3	L4	L5	L6	L7	L8	L9	L10	L11	L12	L13	L14	L15	L16	L17	L18	L19	L20	L21	ØD1	ØD2	ØD3	ØD4	M1	M2	M3	CH1
32	177	37	61	125	64	32.5	32.5	12	6.5	32.5	78	90	97	32.5	45	49	12	4.3	76	17	74	12	30	10.5	6.5	M6	M6	M10x1.25	15
40	192	37	69	139	74	38	38	15	6.5	38	84	110	115	38	54	58	14	11	81	21	87	16	35	10.5	6.5	M6	M6	M12x1.25	15
50	205	38	85	148	89	46.5	46.5	15	9	46.5	100	130	137	46.5	63	69	16	18.8	78	26	104	20	40	13.5	8.5	M8	M8	M16x1.5	22
63	237	37	100	182	88	56.5	56.5	15	9	56.5	105	145	152	56.5	79	85	16	15.3	111	26	119	20	45	13.5	8.5	M8	M8	M16x1.5	22
80	280	42	130	215	110	72	72	20	11	72	130	180	189	72	99	105	20	21	128	34	148	25	45	18	11	M10	M10	M20x1.5	27
100	280	37	150	220	115	89	89	20	11	89	150	200	213	89	120	129	20	24.5	128	39	172	25	55	18	11	M10	M10	M20x1.5	27